

FILTER OVERVIEW WITH SERVICE INTERVALS AND CAPACITIES

(765001-) S-Series Combines S650, S660, S670, S680, S690

ENGINE ENGINE AIR PRECLEANER PRIMARY FILTER [HXE11090](#) ENGINE AIR PRECLEANER SECONDARY FILTER [HXE11091](#)

Check every 400 hours. Service Primary Air Filter when engine air filter restricted indicator is shown on display. Check safety filter for plugging.



ENGINE DIESEL EXHAUST FLUID (DEF) TANK VENT FILTER [H216169](#) Clean every 250 hours and replace every 400 hours.



ENGINE FUEL TANK VENT FILTER [H216169](#) Clean every 250 hours and replace every 400 hours.



ENGINE PRIMARY FUEL FILTER [RE539465](#) SECONDARY FUEL FILTER [RE533910](#) [RE525523](#) FUEL FILTER TIER 2 (S650, S660, S670) [RE532952](#) PRIMARY FUEL FILTER TIER 2 (S680, S690)

Replace every 400 hours and when performance decline is noticed or Diagnostic Trouble Code (DTC) is generated.



ENGINE OIL FILTER (S650, S660, S670) [RE509672](#) (S680, S690) [RE572785](#)

Minimum hours before first engine oil change is 100 hours. Extended engine oil change every 500 hours or annually, whichever come first. The extended 500 hour interval is only allowed if using Plus-50™ II oil with a John Deere filter and diesel fuel with sulfur content less than 15mg/kg (15ppm). If all conditions are not met, change oil and filter at 250 hours of operation. (Click here for [capacity](#))



CAB FRESH AIR FILTER [RE284091](#)

Clean or replace every 50 hours and as required



CAB RECIRCULATION AIR FILTER [L214634](#)

Clean or replace every 200 hours and as required.



ENGINE DIESEL EXHAUST FLUID (DEF) DOSING FILTER [DZ114640](#)

Replace every 4500 hours or every three years of operation, whichever occurs first.



ENGINE FUEL PRECLEANER FILTER [R502778](#) HEAVY-DUTY FUEL PRECLEANER FILTER (OPTIONAL) [N378886](#)

Clean Every 50 hours and Every 400 hours or When Diagnostic Trouble Code (DTC) is generated.



HYDRAULIC HYDROSTATIC FILTER [AH128449](#)

Replace every 400 hours.



ENGINE DEBRIS MANAGEMENT AIR FILTERS

PRIMARY [AXE42066](#)

Check every 50 hours. Service Primary Air Filter when engine debris management air filter restricted indicator is shown on display.

SECONDARY [AXE42065](#)

Never clean the safety element. Replace if dirty. Service or Change Secondary filters as required with Primary Filter.



HYDRAULIC/HYDROSTATIC/ TRANSMISSION

MAIN ENGINE GEARCASE FILTER [AH128449](#)

Replace after First 100 hours and then after Every 400 hours.

HYDRAULIC RETURN FILTER (S650, S660, S670 Electric Shift Transmission & S660, S670 ProDrive™ Transmission) [AT129775](#)

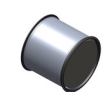
Replace every 400 hours.

HYDRAULIC RETURN FILTER (Reservoir)(S680, S690 ProDrive™ Transmission) [AXE12964](#)

Replace every 1000 hours and when performance decline is noticed or Diagnostic Trouble Code (DTC) is generated.

HYDROSTATIC DRIVE PUMP (S660, S670, S680, S690 ProDrive™ Transmission) [AN207368](#)

Replace every 400 hours.



ENGINE DIESEL PARTICULATE FILTER (DPF)

(S650, S660, S670) [RE542183](#)
(S680, S690) [RE541836](#) (IT4)
(S660, S670) (765000 - 785000) [RE561840](#) (FT4)
(S650) (765000 - 785000) [RE561836](#) (FT4)
(S650, S660, S670) S.N (785001- 795000) [DZ100174](#) (FT4)
(S680, S690) S.N (765250 - 785000) [RE561844](#) (FT4)
(S680, S690) S.N (785001 -) [DZ100175](#) (FT4)

Check Every 4500 hours or Diagnostic Trouble Code (DTC) is generated.



JOHN DEERE

Genuine Parts and Service

CAPACITIES

(765001-) S-Series Combines S650, S660, S670, S680, S690

CAPACITIES (Approximate):

Fuel Tank:

| | |
|------------------------|-------------------|
| S650, S660, S670 | 950 L (250 gal) |
| S680, S690 | 1,250 L (330 gal) |

Cooling System with Heater:

Cool-Gard™ II

| | |
|---------------------------|--------------------|
| S660, S670 | 53 L (14 gal) |
| S680, S690 (Tier 2) | 61.2 L (16.16 gal) |
| S680, S690 (FT4) | 85 L (22.5 gal) |

Engine Crankcase with Filter:

Plus-50™ II

| | |
|---------------------------|-------------------|
| S650, S660, S670 | 27.5 L (7.30 gal) |
| S680, S690 (Tier 2) | 39 L (10.30 gal) |
| S680, S690 (FT4) | 43 L (11.35 gal) |

Transmission (Mechanical Shift and Push Button Shift Machines):

GL-5

| | |
|------------------------|------------------|
| S650, S660, S670 | 9.6 L (2.53 gal) |
|------------------------|------------------|

Engine Gearcase with Transfer (Mechanical Shift and Push Button Shift Machines):

Hy-Gard™

| | |
|------------------------|------------------|
| S650, S660, S670 | 21.3 L (5.6 gal) |
|------------------------|------------------|

Engine Gearcase with Transfer (ProDrive™ Machines):

Hy-Gard™

| | |
|------------------------|-----------------|
| S670, S680, S690 | 51 L (13.5 gal) |
|------------------------|-----------------|

Final Drives:

GL-5

| | |
|------------------|----------------|
| All Models | 8 L (2.11 gal) |
|------------------|----------------|

Countershaft Drive Gearcase:

GL-5

| | |
|------------------|------------------|
| All Models | 1.9 L (0.50 gal) |
|------------------|------------------|

Heavy-Duty Feeder House Reverser Gearcase without Cooler:

ISO VG 460 Fully Synthetic

| | |
|------------------------|------------------|
| S650, S660, S670 | 2.3 L (0.60 gal) |
|------------------------|------------------|

Heavy-Duty Feeder House Reverser Gearcase with Cooler:

ISO VG 460 Fully Synthetic

| | |
|------------------|------------------|
| S650, S660 | 3.5 L (0.92 gal) |
|------------------|------------------|

Extra Heavy-Duty Feeder House Reverser Gearcase without Cooler:

ISO VG 460 Fully Synthetic

| | |
|------------------|------------------|
| S680, S690 | 3.6 L (0.95 gal) |
|------------------|------------------|

Extra Heavy-Duty Feeder House Reverser Gearcase with Cooler:

ISO VG 460 Fully Synthetic

| | |
|------------------------|------------------|
| S650, S660, S670 | 4.9 L (1.29 gal) |
|------------------------|------------------|

Multi-Speed Feeder House Reverser Gearcase with Cooler (Optional):

ISO VG 460 Fully Synthetic

| | |
|------------------------|------------------|
| S670, S680, S690 | 5.2 L (1.37 gal) |
|------------------------|------------------|

Loading Auger Gearcase:

GL-5

| | |
|------------------|------------------|
| All Models | 3.8 L (1.00 gal) |
|------------------|------------------|

Two Speed Separator Drive Gearcase:

GL-5

| | |
|------------------|------------------|
| All Models | 4.7 L (1.24 gal) |
|------------------|------------------|

Diesel Exhaust Fluid (DEF) Tank:

John Deere™ Diesel Exhaust Fluid

| | |
|------------------|-------------------|
| All Models | 52.2 L (13.8 gal) |
|------------------|-------------------|

Premium Overshot Beater Gearcase (if equipped):

GL-5

| | |
|------------------------|------------------|
| S670, S680, S690 | 0.2 L (0.05 gal) |
|------------------------|------------------|

Hydraulic/Hydrostatic Reservoir:

Hy-Gard™

| | |
|------------------------|-----------------|
| S650, S660, S670 | 31 L (8.2 gal) |
| S680, S690 | 47 L (12.4 gal) |

[Return to Filter Overview](#)



JOHN DEERE

Genuine Parts and Service